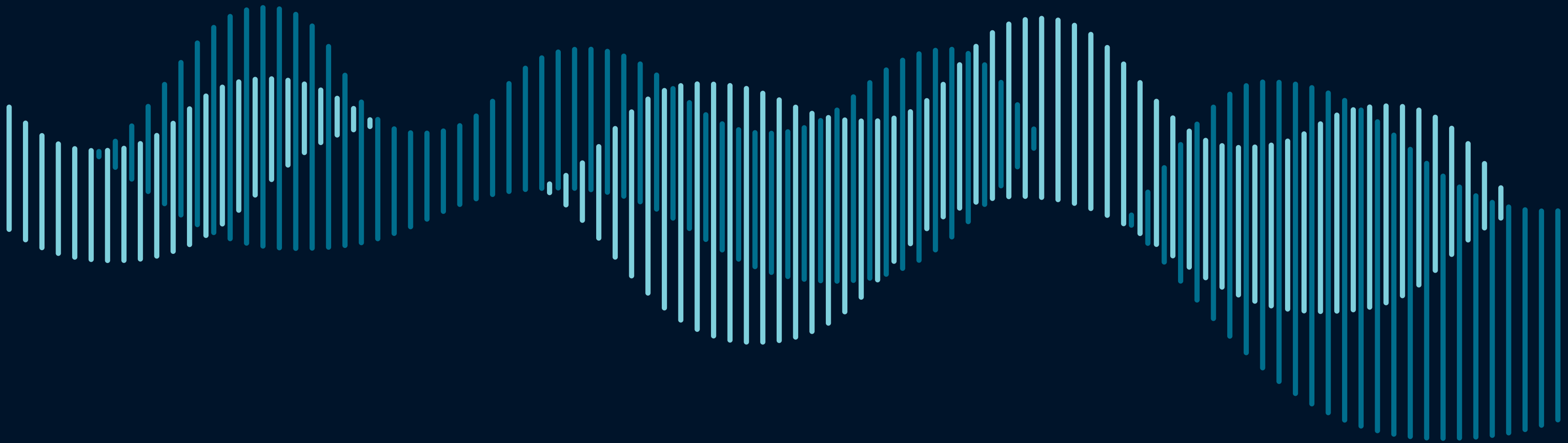


AAPL ANNUAL REPORT

2024-2025



LEADERSHIP

FROM THE PRESIDENT & EVP

FINANCIAL POSITION

FINANCIAL POSITION

ACTIVITIES

MEMBER SERVICES

MEMBERSHIP

CERTIFICATION

EDUCATION

EVENTS

2024-2025
EXECUTIVE COMMITTEE

President: Nancy C. McCaskell, CPL MASONBORO ENERGY LLC
1st Vice President: Kyle B. Reynolds, CPL RBG PERMIAN LLC
2nd Vice President: Mark H. Caponegro, CPL FAULCONER ENERGY
3rd Vice President: William E. “Bill” Hackett, CPL WCM RESOURCES LLC/PORTAL 2 ENERGY LLC
Secretary: Christine J. Touchstone, CPL LEFRAK ENERGY
Treasurer: Amy L. Gwyn, CPL DEVON ENERGY CORPORATION
Immediate Past President: Brooks Yates, CPL YATES RESOURCES LP

LOCAL ASSOCIATION DIRECTORS

Alaska	Jason Lyons, RPL
Ark-La-Tex	Paul Wood, CPL
Austin	Jimmy Wright, CPL
Bakersfield	Christin L. Faber, RPL
Baton Rouge	William F. O’Neal, CPL
Canadian	Janice Redmond
Corpus Christi	William “Bill” P. Moffitt, CPL
Dallas	Jason T. Maloy, CPL
Denver	Tyler D. Aylor
East Texas	Lucy Wathen, CPL
Fort Smith	William C. “Bill” Warren Jr., CPL
Fort Worth	Sean Foster, RPL
Houston	Andrew Cooper, CPL
Lafayette	Thomas Simon, CPL
Los Angeles	Marcia Carlisle
Michael Late Benedum	Jeremy White, RPL
Michigan	Russell Shinevar, CPL
Mississippi	Keri L. Meek, CPL
Montana	John R. Lee, RPL
Nevada	Orson K. Tingey, CPL
New Mexico	Jack A. Richardson, CPL
New Orleans	Alex Guitart, RPL
North Dakota	Ian Vestal
North Houston	William H. Holstien, CPL
North Texas	Terry P. Caves, CPL
Oklahoma City	Matt S. Beavers, CPL
Panhandle	
Permian Basin	Derek Whiting, RPL
San Antonio	Ryan L. Alford, RPL
San Juan Basin	Matthew A. “Matt” Gray, CPL
Southern Appalachian	Richard D. Adkins, CPL
Southern Oklahoma	Lars Noble, CPL
Tri-State	Ryan Kopp, RPL
Tulsa	Denton Smith, CPL
Utah	
West Houston	Andrew McGhee, CPL
Wichita	Lindsey Goodwin, RPL
Wyoming	Adam Sarvey

COMMITTEE CHAIRS

Accreditation	Kelly Kessler, CPL
Annual Meeting	Zachary T. “Zach” Smith, CPL
Awards	Michael Pisciotte, CPL
Bylaws & Policy Manual Review	Ryan Schneider, CPL
Certification	Joel M. Robbins, CPL
Council of Past Presidents	Jack C. Richards, CPL
Diversity & Inclusion Council	Britney Crookshanks, CPL
Education Committee	Jerry David Padilla, CPL
Certification Education Committee	Taylor Cann, CPL
Ethics	Jason T. Maloy, CPL
Field Landman	Wesley T. Day, CPL
Finance	Kyle B. Reynolds, CPL
Forms	Dan Dickensheet, CPL
Governmental Affairs	Douglas B. Schmidt, RPL
Membership	William G. “Will” Boone, CPL
Mentorship Committee	Pamela D. Feist, CPL
Nominating Subcommittee	Carl D. Campbell, CPL
Publications	Robert G. Walter, CPL
Strategic Planning	Kyle B. Reynolds, CPL
Technology	Christopher Remmert
NAPE Advisory Board	David R. Cape, CPL
NAPE Management Committee	Nancy C. McCaskell, CPL
NAPE Operators Committee	Julie E. Woodard, CPL

AFFILIATED ENTITIES CHAIRS

AAPL Educational Foundation, Inc.	Dirk VanderPloeg II, CPL
Investment Advisory	Kyle B. Reynolds, CPL
Landman Scholarship Trust	Rodney L. Black, CPL

AD HOC CHAIRS

Artificial Intelligence	Cranford Newell Jr., CPL
Association Management Software	Jerris Johnson, CPL
Media Preparedness	Jason Maloy, CPL
Horizon Student Initiative	Katherine S. Chalfant, CPL
Energy Engagement & Expansion	Dan Dickensheet, CPL
Board Meeting	Julie Woodard, CPL

INDUSTRY REPRESENTATIVES

Energy & Mineral Law Foundation	Sandra K. Fraley-Zitkus, RPL
GeoCare Insurance	Jane R. Crouch, CPL
LSU Mineral Law Foundation	Greg Riedl, CPL/ESA
Outer Continental Shelf	Chad Elias
FNREL	Michelle L. Phillips, CPL
Southwest Land Institute	DJ Cherry Jr., RPL

FROM THE PRESIDENT & EVP/COO
ANNUAL REPORT – MCCASKELL & CALLIHAN

Dear Members,

As we reflect on the past year, we do so with immense pride, gratitude and excitement for what lies ahead. Our Annual Report highlights a successful year for AAPL and NAPE marked by growth, resilience and progress. Together, we have rung the bell forward.

We have continuously asked ourselves how we can do more and be better for our members, for the profession and for the broader energy community. The answer has been clear: listen, learn and lead with purpose.

Thanks to the unwavering support and engagement of our membership, we proudly exceeded our budgeted membership goal by more than 500 members for a total of 11,157 members, which is a powerful indicator of the trust, relevance and value AAPL continues to provide. Amid an ever-evolving energy landscape, our diverse and growing membership reaffirms the strength and adaptability of the land profession.

Financially, we remained disciplined and strategic. Through vigilant expense management, resource optimization and thoughtful prioritization, we not only cut costs but did so while expanding services. We worked hard to end the year beyond a balanced budget with a surplus while making high-impact investments in education, advocacy and innovation.

This year, we launched several exciting new educational initiatives. We successfully introduced additional Land Institute programs, including the inaugural Oklahoma Energy Institute, and coming this fall, the West Texas Energy Institute in Midland and the AAPL/Texas Blockchain TexCap — Future of Finance conference, showcasing our commitment to equipping land professionals with cutting-edge tools and insights. These events created new pathways to explore emerging opportunities in renewables, carbon capture, geothermal and more.

We also made legislative progress on behalf of land professionals across the country. Several significant bills supporting the land profession were passed, strengthening our

voice in key regulatory and policy arenas. Our legislative wins are a testament to the power of collective advocacy and an active, informed membership.

Throughout the year, our focus remained fixed on service and connection. Through lightning rounds, roundtables, scholarships, disaster relief and community outreach, we lifted each other up and moved forward together. We rolled out new legal forms for everyday use and added tools such as Energy Hire, Energy Domain, and Rowland AI — all designed to enhance our members' efficiency, access and success. We provide links to these services on our website, so members have easy access to utilize if they choose and receive a member discount.

The Landman Scholarship Trust awarded more than \$250,000 to students, and the AAPL Education Foundation expanded its grant and disaster assistance programs giving more than \$211,000 solidifying our commitment to professional development and support in times of need. Our premier NAPE Summit, the world's largest energy expo, exceeded last year's performance and received rave reviews, creating business opportunities to spark the American economy and provide the ideal marketplace for energy players to learn, network and make deals happen.

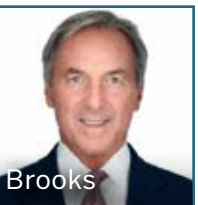
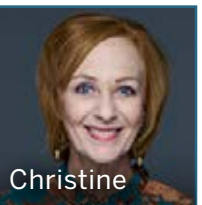
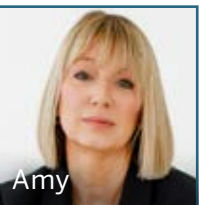
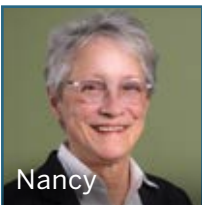
Our journey this year has been both an end and a beginning, reflecting the challenges we've navigated, the successes we've achieved, and the bright horizon we see ahead. As Daniel Webster once said, "Let our age be the age of improvement." That call to action continues to guide our work.

To every member, volunteer, staff member, partner and friend, we say, "thank you." Thank you for your trust, your time and your enduring commitment to our mission. Together, we will keep ringing the bell forward.

With appreciation and optimism,

Nancy McCaskell President, AAPL/NAPE
Le'Ann P. Callihan EVP/COO, AAPL/NAPE

2024-25 EXECUTIVE COMMITTEE

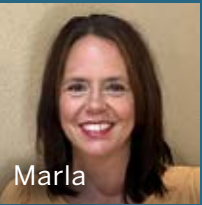
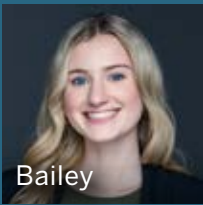
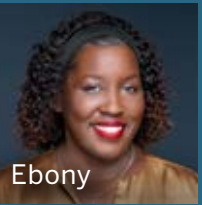
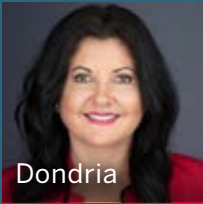
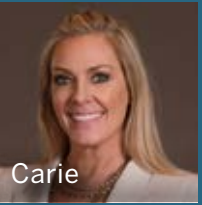
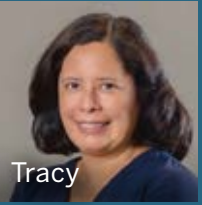


AAPL STAFF: HERE TO SERVE



Please reach out to us with any questions, comments or concerns you may have. We're always happy to help!

► Le'Ann P. Callihan EVP/COO



FINANCIAL POSITION

CONSOLIDATED STATEMENT OF FINANCIAL POSITION

Excerpted from AAPL Audit Report FYE June 30, 2024

Year Ended
June 30, 2024

ASSETS

Cash and Cash Equivalents	\$6,659,786
AR, Prepaid and Other Assets	911,179
Property and Equipment, Net.....	4,395,910
Long-Term Investments	53,066,874
Right-of-use-asset - Operating.....	34,128

TOTAL ASSETS	\$65,067,877
--------------	--------------

LIABILITIES AND NET ASSETS

LIABILITIES

Accounts Payable	\$411,480
NAPE Distributions Payable	1,068,519
Accrued Expenses	198,102
Unearned Revenue	1,555,583
Lease Liability - Operating	78,491
Unearned NAPE Fees	958,200

TOTAL LIABILITIES	\$4,270,375
-------------------	-------------

NET ASSETS

Without Donor Restrictions	
Undesignated	\$59,409,644
Designated.....	35,724

	59,445,368
--	------------

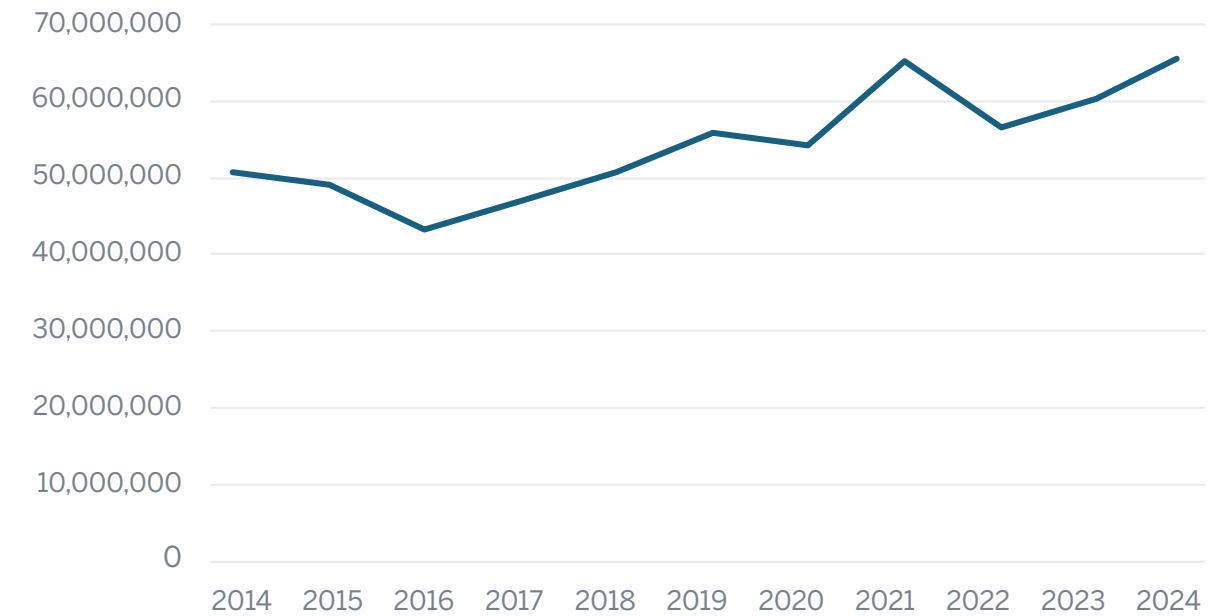
With Donor Restrictions	
Time-Restricted For Future Periods.....	\$1,303,749
Purpose restricted.....	23,385
Perpetual In Nature.....	25,000

	1,352,134
--	-----------

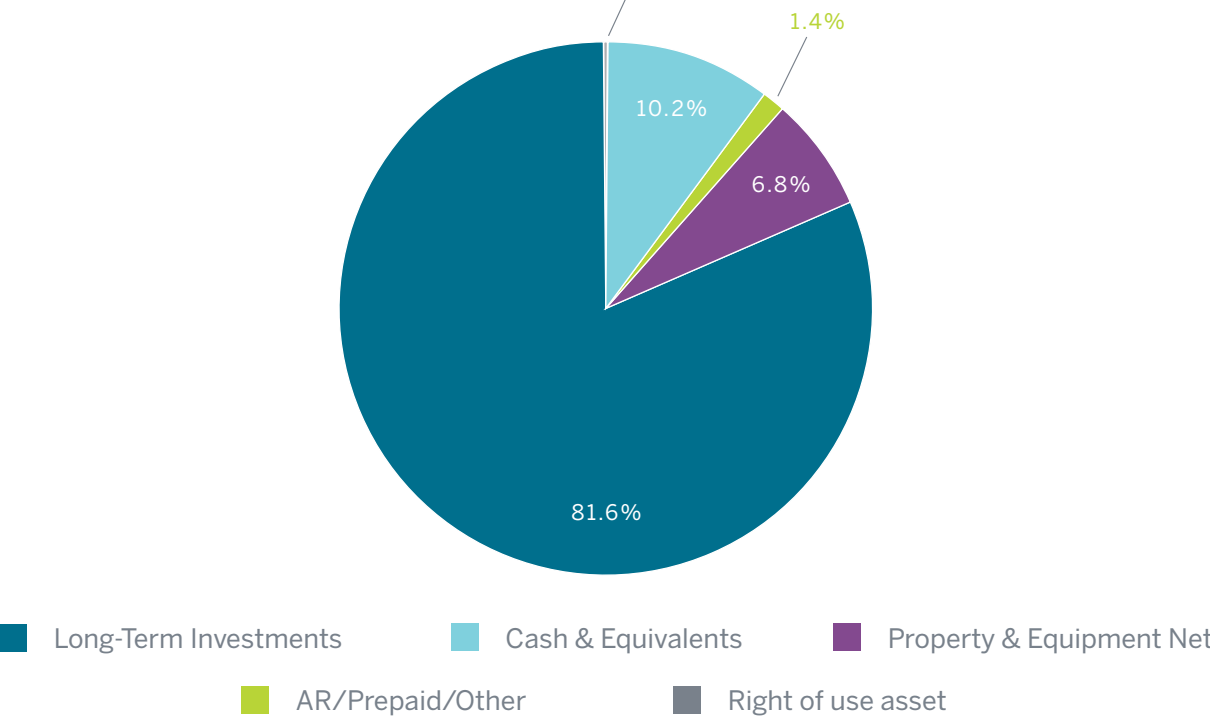
TOTAL NET ASSETS	\$60,797,502
------------------	--------------

TOTAL LIABILITIES AND NET ASSETS	\$65,067,877
----------------------------------	--------------

TOTAL ASSETS BY YEAR



TOTAL ASSETS BY CATEGORY



FINANCIAL POSITION

CONSOLIDATED STATEMENT OF ACTIVITIES

Excerpted from AAPL Audit Report FYE June 30, 2024

Year Ended
June 30, 2024

REVENUES AND OTHER SUPPORT WITHOUT DONOR RESTRICTIONS

Membership Dues	\$1,951,242
Sponsorship.....	131,360
NAPE Expo	5,303,348
Certification Fees and Dues.....	142,825
Educational Seminar Fees	696,262
AAPL Annual Meeting	483,850
Advertising.....	194,081
Contributions.....	158,454
Royalty Income.....	130,181
Investment Income, net of fees	718,351
Other	55,840
Gain (Loss) on Sale of Assets	(15,417)
Realized and Unrealized Gain (Loss) on Investments	4,439,731
Net assets released from restrictions	200,000

TOTAL REVENUES AND OTHER SUPPORT WITHOUT DONOR RESTRICTIONS

\$14,590,108

PROGRAM AND SUPPORT SERVICES

Salaries and Benefits	\$3,637,522
Advertising.....	119,269
Amortization.....	44,764
Bank Fees.....	255,944
Depreciation	146,342
Distributions	21,993
Grants and Other Assistance	525,545
Insurance	145,273
Lease Expense	16,905
Lobbying.....	-
Meals and Entertainment	544,722
Meetings and Conferences.....	1,743,446
Miscellaneous.....	102,153
Professional Fees and Services	452,543
Property Taxes	67,260
Publications	313,396
Repairs and Maintenance	109,736
Software and Technology	348,402
Supplies and Other	470,404

Tax Benefit	48,074
Training and Development.....	2,404
Travel	343,147
Utilities	120,628

TOTAL PROGRAM AND SUPPORT SERVICES

\$9,579,872

REVENUE WITH DONOR RESTRICTIONS

Contributions.....	-
Net assets released from restrictions	(200,000)

CHANGE IN DONOR RESTRICTIONS

\$(200,000)

CHANGE IN NET ASSETS

4,810,236

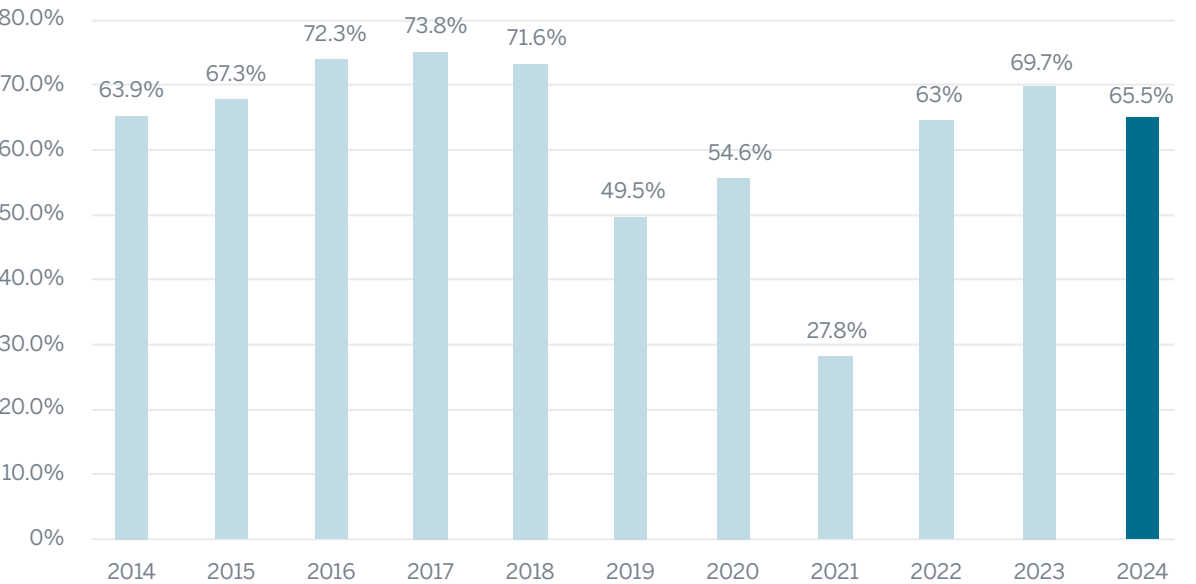
Net Assets at Beginning of Year	57,064,962
Partnership contributions (distributions)	(1,077,696)

NET ASSETS AT END OF YEAR

\$60,797,502

PROGRAM SERVICES AS A PERCENTAGE OF TOTAL REVENUE

(LESS INVESTMENT GAINS/LOSSES)



MEMBER SERVICES HIGHLIGHTS

EVENTS

- Significant gains in revenue and attendance exceeded expectations at every institute last year. The Women in Energy Institute saw a 20% increased attendance year over year; Gulf Coast Land Institute had record high attendance, which has tripled since 2023; Denver Land Institute reached full capacity; Inaugural Oklahoma Energy Institute had 45% more attend than budgeted; Appalachian Land Institute sold out with 17% increase in revenue and attendance; and the Mining & Land Resources Institute sold out with a 54% attendance growth.
- AAPL exhibited at several industry events this past year, including the 2024 Lone Star State School Counselor Association's Annual Conference in Frisco Texas, with over 1,500 education leaders in attendance.
- AAPL sponsored the annual Future of School Symposium, in Arlington, Texas, where over 100 superintendents, district and campus leaders attended, to help spread awareness about careers and higher education in land related fields.

LOCAL OUTREACH AND INVOLVEMENT

- In an effort to gain media coverage to tell AAPL's story and the facts about the land profession, AAPL leadership developed an ad hoc committee to prepare for the launch of the new Landman TV series. The committee worked with staff to develop a landman toolkit to help educate the public about real landmen and engaged with media outlets to help illustrate the differences between Hollywood's version of a landman. Digital advertising, podcasts, new collaborations and outreach to traditional news outlets have all helped AAPL's online presence and off-site search engine optimization for the huge success of the Landman TV series.
- Social media performance continues to grow reaching audiences of more than 20,000. LinkedIn leads the way

with an impressive 66% of AAPL's following compared to Facebook (16%), X (13%) and Instagram (5%).

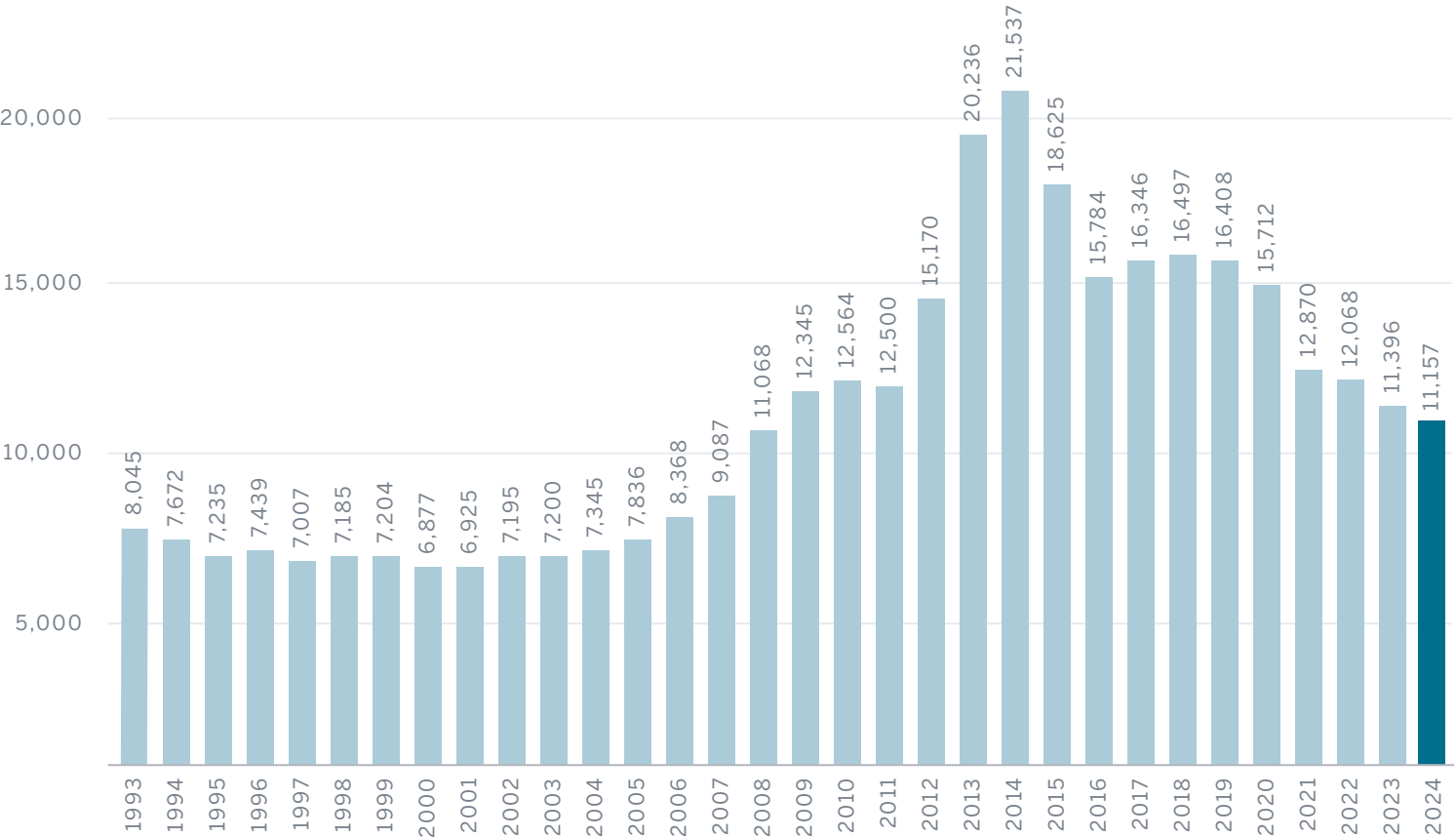
- A new calendar has been developed to help coordinate and promote AAPL and local association events. Local leaders can now add their events to a calendar that AAPL members can access.
- Provided members with comprehensive special election coverage of the Trump presidential administration transition following the November 2024 general election, that included numerous energy-focused executive orders, federal agency directives, and legislative initiatives affecting both traditional energy and renewables.
- Tracked, analyzed, and reported on more than 900 bills for members – a record number – through the biweekly governmental affairs bill tracking spreadsheets, and published biweekly governmental affairs reports for members on monitored legislative, regulatory, and judicial matters – totaling nearly 600 pages of original content available exclusively for AAPL members.
- Joined national and regional partner energy groups and state oil and gas associations, such as the Independent Petroleum Association of America, American Exploration & Production Council, the Texas Independent Producers & Royalty Owners Association, and the Western Energy Alliance, among others, to promote and support advocacy campaigns, regulatory proposals, and stakeholder outreach to protect a landman's right to work and support domestic energy exploration and production, both from traditional and renewable sources.
- Provided AAPL members with late-breaking continuous regulatory changes to the U.S. Treasury Department's new reporting requirement of beneficial ownership information for domestic companies under the Corporate Transparency Act that affected AAPL members working in partnerships, LLCs, corporations and other business entities.

SPECIAL INITIATIVES

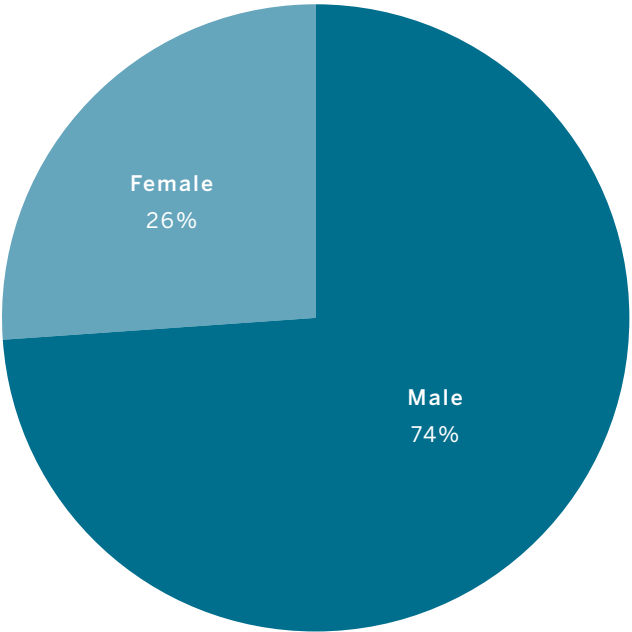
- Successful passage of AAPL-sponsored Texas legislation, SB 1172, that protects AAPL members by providing a landman exemption from required Texas Real Estate Commission licensing for landwork in renewables and other energy sources imposed by the Texas Attorney General in June 2024.
- Launched Landman Now podcasts, generating public awareness and education about the land profession, AAPL's role and an in-depth look at member benefits, current events and separating fact verses fiction about the new Landman TV series.
- The Alliance Partners Program remains strong with nine participating E&Ps that include: bpx energy, Chevron, Coterra, Devon, EOG Resources, EQT, Expand Energy, Ovintiv and Oxy.



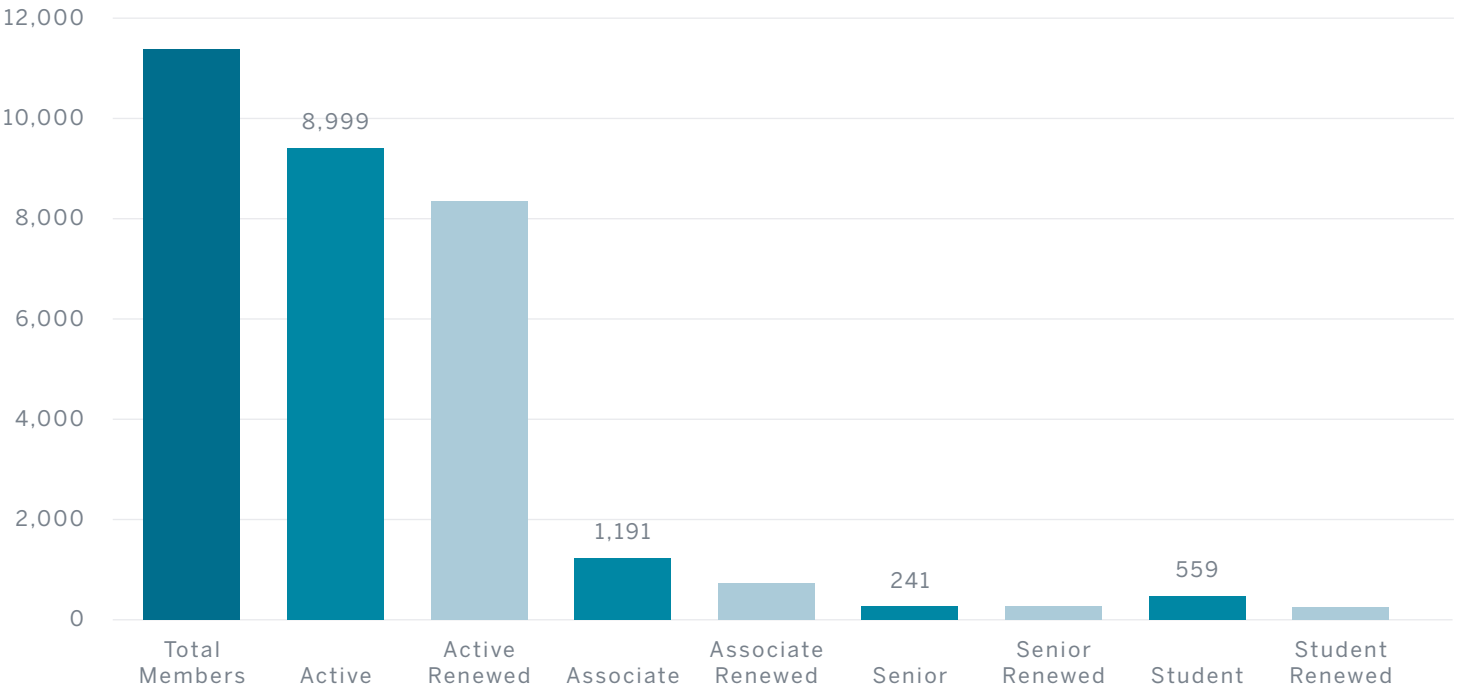
MEMBERSHIP BY YEAR



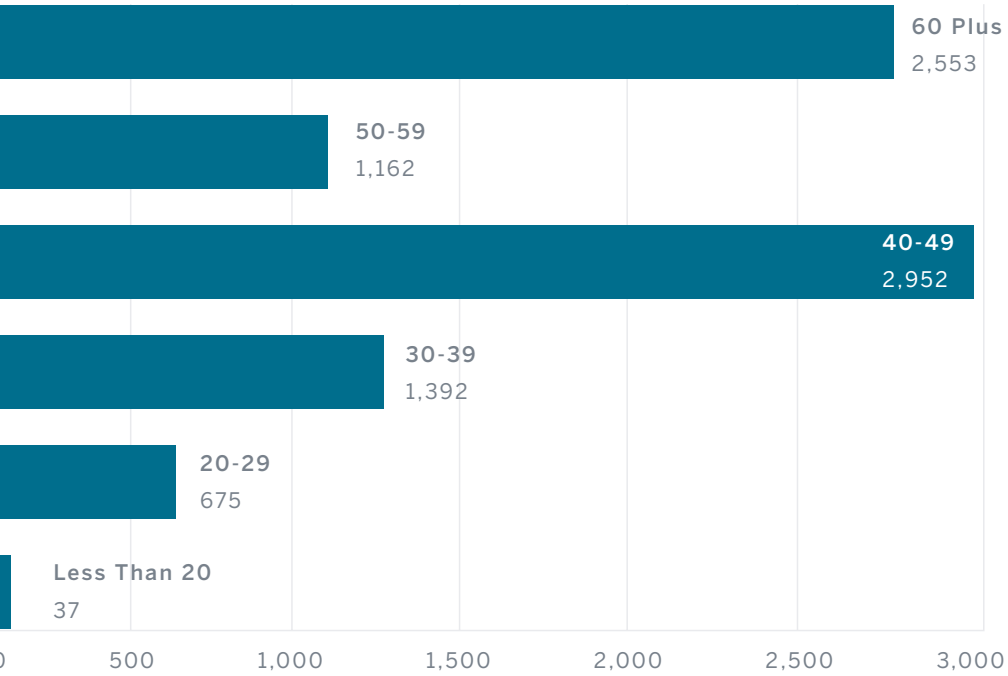
MEMBERSHIP BY GENDER



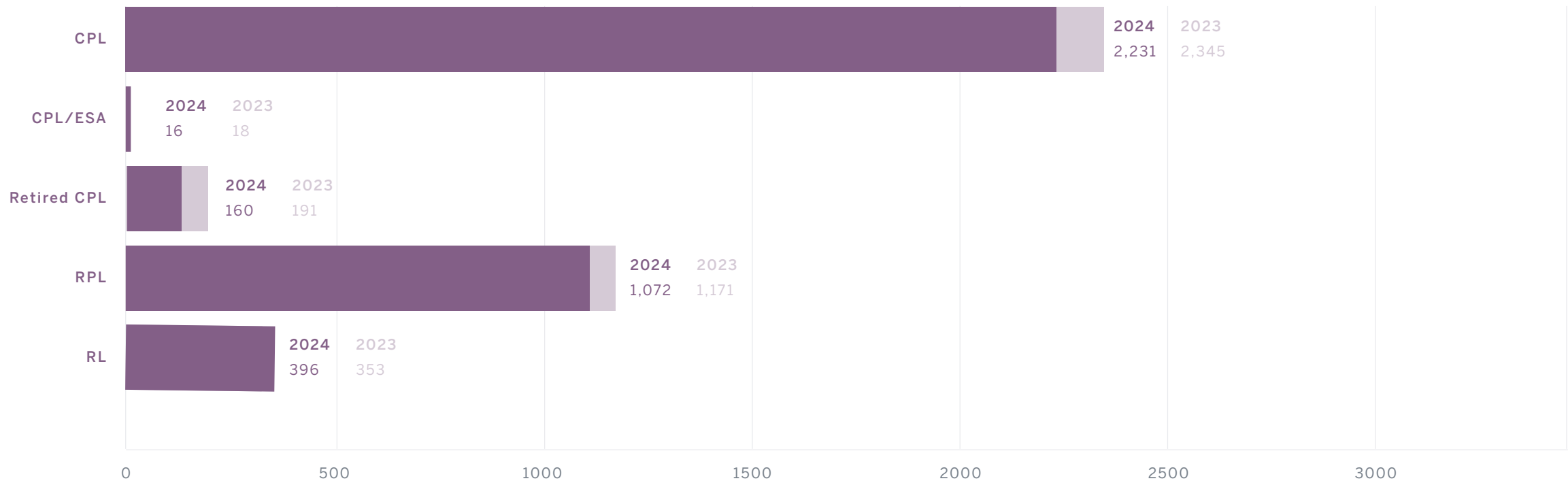
TOTAL MEMBERSHIP VERSUS RENEWAL NUMBERS BY TYPE



MEMBERSHIP BY AGE GROUP



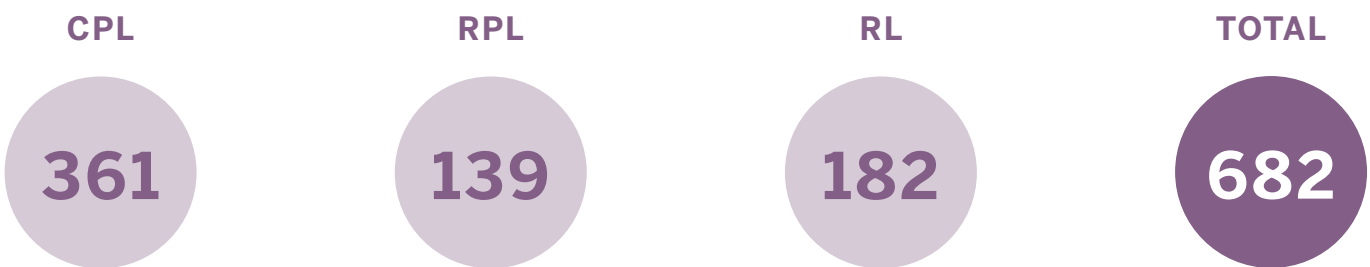
CERTIFICATION NUMBERS BY CERTIFICATION LEVEL: FISCAL YEAR 2023 VS FISCAL YEAR 2024



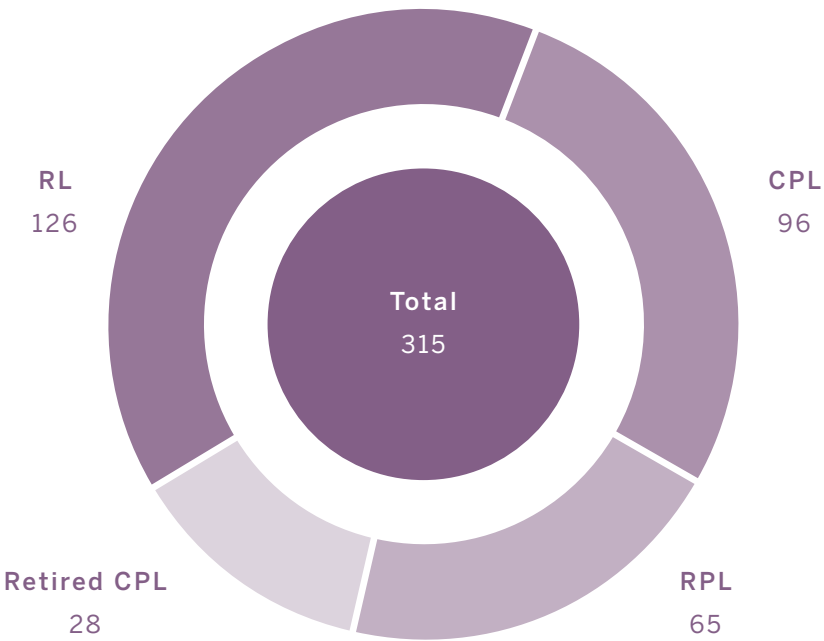
TOTAL CERTIFICATIONS BY LEVEL



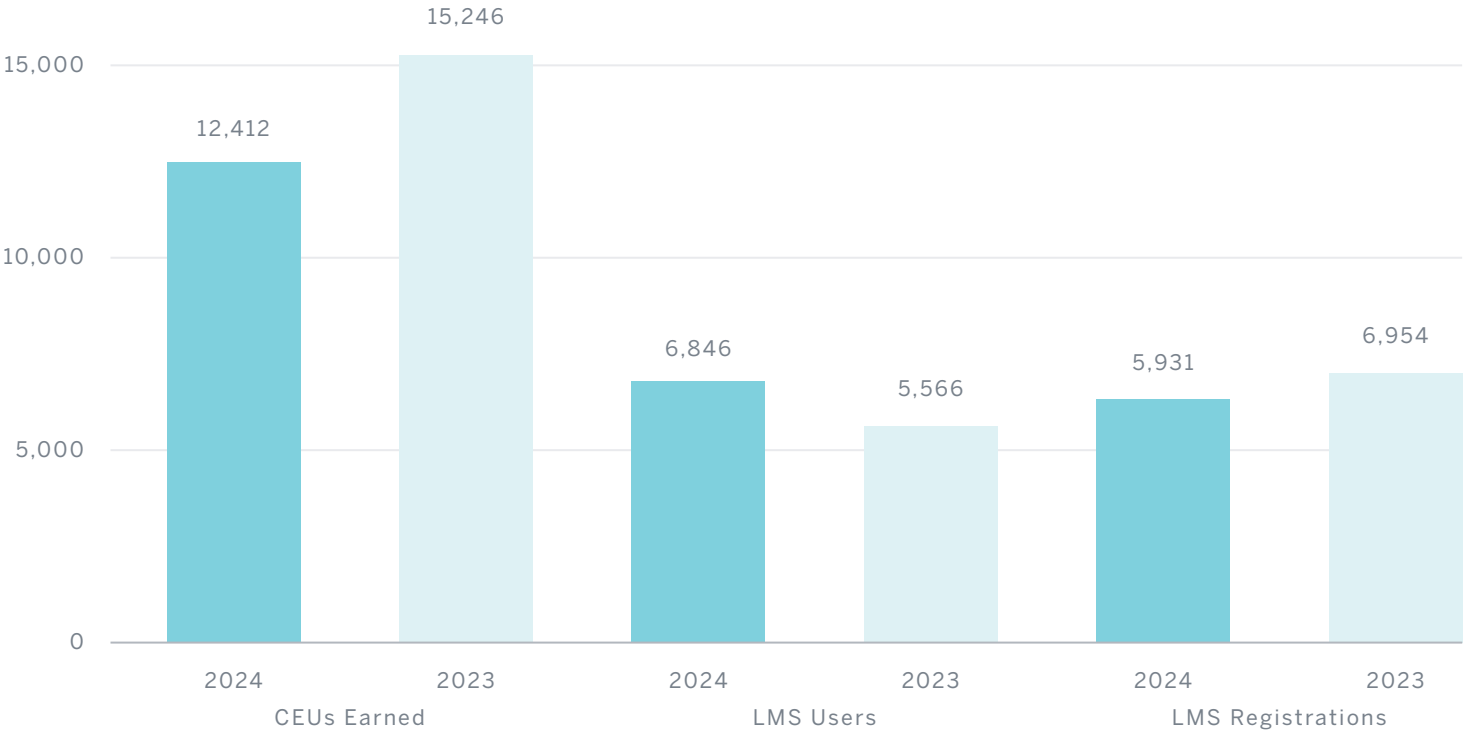
MEMBERS RECERTIFIED IN FISCAL YEAR 2024



APPLICATIONS REVIEWED IN FISCAL YEAR 2024



CEUS EARNED, LMS USERS, LMS REGISTRATIONS



UNIQUE USER PAGE VIEWS IN THE LMS

204,738

UNIQUE SITE VISITORS TO THE LMS

159,369

ON-DEMAND COURSES ACTIVE IN THE LMS

311

INSTITUTES



FIELD LANDMAN SEMINARS



RPL/CPL REVIEWS



WEBINARS



ON-DEMAND COURSES



ANNUAL MEETING



BOARD MEETINGS AND ANNUAL MEETING

BOARD MEETINGS

SEPTEMBER 27-29, 2024

Grand Traverse Resort and Spa
100 Grand Traverse Village Boulevard
Acme, MI 49610

DECEMBER 6-8, 2024

Rancho Bernardo Inn
17550 Bernardo Oaks Drive
San Diego, CA 92128

MARCH 14-16, 2025

Newport Harbor Island Resort
1 Goat Island
Newport, RI 02840

JUNE 17-18, 2025

Loews Kansas City Hotel
1515 Wyandotte Street
Kansas City, MO 64108

2025 AAPL ANNUAL MEETING

KANSAS CITY, MO | JUNE 18-20, 2025

The 71st Annual Meeting was held in Kansas City, MO, and was attended by 418 land professionals. Seven concurrent education sessions offered attendees numerous possibilities to earn continuing education credits, with a couple of bonus education events, three keynote sessions and two memorable evening events to round out fantastic opportunities for learning and networking at the conference.

NAPE HIGHLIGHTS

The 2025 NAPE Summit in Houston continued NAPE’s three-decade tradition of driving industry growth and innovation. This premier energy gathering brought together global leaders, decision-makers, and innovators to focus on strategic dealmaking, networking, and exploring new frontiers in energy.

- ◆ **GOVERNORS FORUM:** Featured Harold Hamm, founder of Continental Resources, and Wyoming Gov. Mark Gordon in a candid discussion on legislative and regulatory issues impacting upstream energy operations and investments.
- ◆ **EXCLUSIVE C-SUITE ENGAGEMENT:** An invitation-only C-Suite Breakfast connected executives from major E&P companies, fostering high-level dialogue on energy trends, partnerships and innovation strategies.
- ◆ **ENERGY BUSINESS CONFERENCE:** Delivered a dual-track agenda included business and technical sessions covering topics such as global energy demand outlook, M&A momentum, and risks and applications of artificial intelligence. Wil VanLoh, founder and CEO of Quantum Capital Group, served as the luncheon keynote speaker, addressing security and the practice realities of the energy transition.
- ◆ **EXPO HUBS:** In addition to the Renewable Energy Hub, Bitcoin Mining Hub, opportunities were expanded with the addition of the Minerals & NonOp Hub.
- ◆ **EXPO LUNCH:** Focused on an AI-powered platform to enhance session discovery and networking.
- ◆ **NAPE/SMU ENERGY INNOVATION CASE COMPETITION:** University teams presented forward-thinking solutions, with \$40,000 in prizes awarded to future energy leaders.
- ◆ **CHARITABLE GIVING:** NAPE Charities surpassed \$6 million in lifetime donations to benefit U.S. veterans. Anthony J. DeToto American Hero Award was presented to Congressman Dan Crenshaw, and \$100,000 donations were awarded to both to Project Sanctuary and That Others May Live Foundation.
- ◆ **CHARITIES CELEBRATION:** Featured a lively performance by the Josh Abbott Band.
- ◆ **NAPE CHARITIES GOLF TOURNAMENT:** A signature fundraising event, supporting veterans-focused nonprofits. New in 2025, the NAPE Pickleball Tournament debuted as a lively, inclusive way for attendees to support charitable causes.